

EZ Wipes®

MULTI-PURPOSE INDUSTRIAL CLEANING WIPES

FOR VERSATILE APPLICATIONS AND SURFACES

Ideal for cleaning industrial work surfaces, especially pipes where contamination can severely impact the quality of the weld.

Surfaces

- Tools
- Machinery
- Pipes
- Workbenches
- Vinyl and metal surfaces
- Car parts

Loosens and Removes Variety of Contaminants

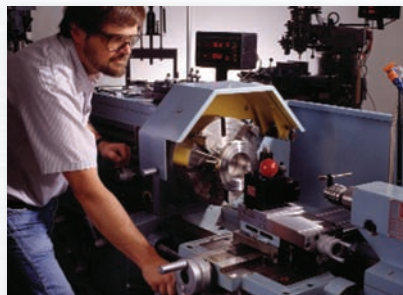
- Lubricants
- Grease
- Tar
- Paints
- Sealants
- Heavy grease
- Oils
- Marker
- Wax
- Caulk
- Epoxies
- Adhesives



Applications



Auto Shop



Equipment

Efficient and Cost Effective

More convenient to use than solution rags, pre-saturated EZ Wipes make cleaning nearly effortless; simply remove the wipe from the pouch and start cleaning!

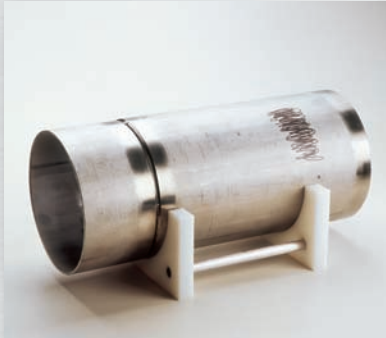
Eco Friendly and Safe

- Pre-saturated wipes contain natural solvent, limonene
- CFC & HCFC free
- Easily disposable, can be thrown away in ordinary trash

Shred Resistant and Lint Free Two-Sided Cleaning System

- Abrasive side loosens and removes dried on surface contaminants
- Smooth side completes the process by removing remaining particles to reveal a clean and polished surface

Pure Welds Start with Preparation



Remove the wipe from the pouch



While wearing gloves, use the abrasive side of the wipe to remove contaminants from the pipe or other surface to be cleaned



Use the smooth side to re-wipe the surface, ensuring all impurities are removed

SPECIFICATIONS

EZ Wipes® Types and Sizes

A disposable 8" x 12" saturated wipe featuring a specially formulated blend for maximum cleaning power

ITEM NO.	DESCRIPTION	DIMENSIONS		CASE PACK
		ENGLISH	METRIC	
EZW-ONE	Two-sided saturated cleaning wipe sheet	8" x 12"	20 x 30 cm	500 pieces